



Non-towered Airport Procedures & Information

Downtown Island Airport (DKX)

Knoxville, Tennessee

I. Purpose

In the past, the Downtown Island Airport (DKX) has utilized a temporary tower during University of Tennessee home football games for local Air Traffic Control services. However, there will be **NO ATC Tower** in operation for the 2009 UT football season. DKX will continue operating as a Non-towered Airport during these home games.

Due to national security concerns, a **Temporary Flight Restriction (TFR) NOTAM** is required to be issued on all game days. FDC NOTAM 9/5151 outlining Temporary Flight Restrictions from one hour prior to game time until one hour after the game ends will be in effect. The TFR fully encompasses the DKX airport. TFR information is available at <http://tfr.faa.gov> or through Flight Service. Aircraft inbound to the Knoxville, TN area should monitor the McGhee Tyson Airport ATIS on 128.35 for up to date TFR information.

If you are planning on flying to DKX for any of the 2009 UT home football games, we recommended you **Avoid the TFR by arriving at DKX at least 1 hour prior to kickoff and departing at least 1 hour after the game ends.** Otherwise, please read and become familiar with the following attached documents:

1. A copy of the FAA ATC Knoxville Letter to Airmen 09-02
2. Standard FAA TFR definition page

Home football games are scheduled for the following dates:
September 5, 12, 26 / October 3, 10, 31 / November 7 and 21

Please note that this is not an official document that mandates how you should fly your aircraft. As PIC, you are responsible for the safe operation of your aircraft as well as all associated flight planning. Please refer to Airmen's Information Manual (ref. 4-3-3 and 4-3-4) and AOPA (www.asf.org) for specific pilot guidance on Operations at Non-towered Airports.

II. Distribution

This document shall be distributed (via email or paper) to based customers, pilots whom have previously flown into DKX during UT football games and airports surrounding the cities of competitor teams based on the 2009 UT home schedule. It shall also be posted on the Airport Authority's website with other relevant pilot information.

III. General TFR Information (1 hour prior to game time thru 1 hour after game ends)

- ✓ Aircraft inbound to DKX during the effective times of the TFR can expect to keep their transponder set on the assigned beacon code until landing, even if their IFR flight plan is cancelled prior to entering restricted airspace.
- ✓ VFR arrivals to DKX during the effective times of the TFR will be required to obtain a transponder code from Knoxville Approach Control and will be required to keep their transponder set on the assigned code until landing.
- ✓ Aircraft without radios must remain clear of the restricted airspace.
- ✓ All aircraft must avoid flying directly over Neyland Stadium.
- ✓ All aircraft departing DKX during the effective times of the TFR are required to contact Downtown Clearance Delivery on 121.7 prior to taxi to obtain either an IFR clearance or a VFR transponder code and a departure control frequency. IFR clearances will be issued with a "Hold For Release."
- ✓ Do not call for IFR release until number one at the end of the runway and ready for immediate departure.
- ✓ Information regarding waiver applications in accordance with section 352 of public law 108-7 can be obtained from the FAA website at [HTTP://WWW.FAA.GOV/ATS/ATA/WAIVER](http://www.faa.gov/ats/ata/waiver) or by calling 571-227-1322

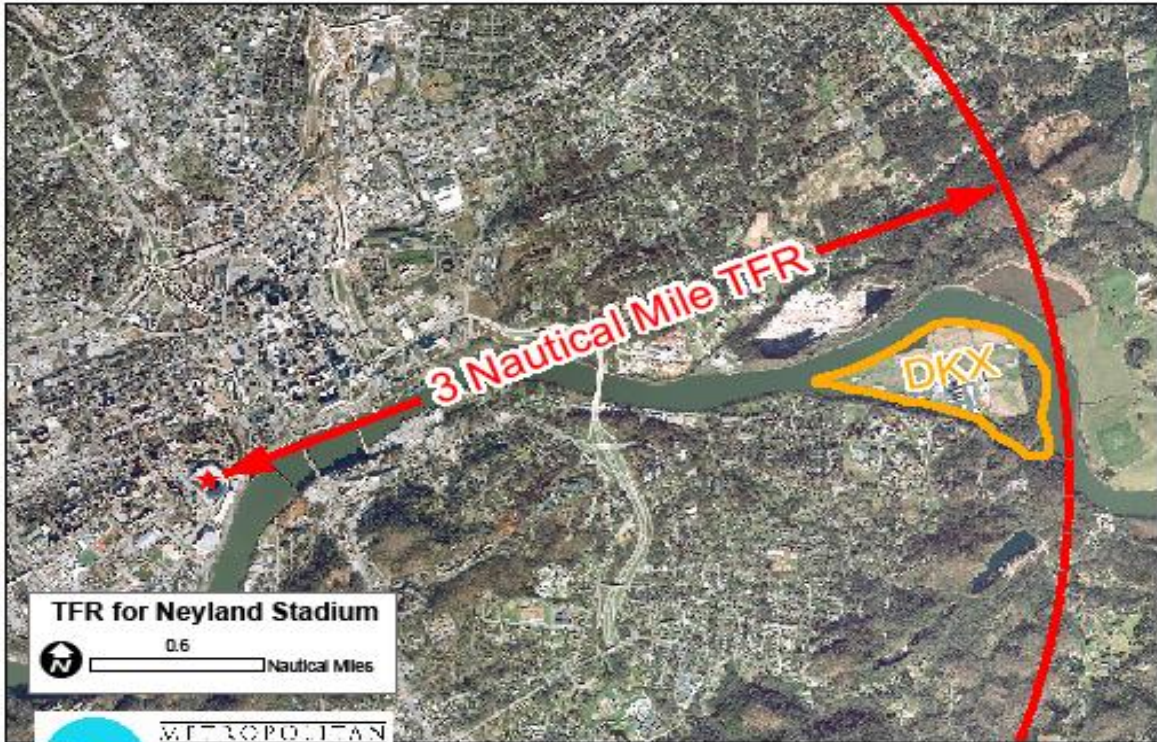
IV. General NON-TFR Operational Information

- ✓ Aircraft should fly the pattern using "left traffic" at 1,000' AGL.
- ✓ If it's necessary to overfly the airport (to enter the pattern), be at least 500' above pattern altitude – Don't fly "over the top" at pattern altitude.
- ✓ Descend to pattern altitude prior to entering the pattern.
- ✓ Avoid performing high or extended downwind legs unless you are piloting a turboprop. (ie: Piston-driven singles and twins should be flying the same pattern.)
- ✓ Avoid base entries or "straight-in" finals regardless of the time you might "save" and/or despite your belief that no one else is in the pattern.

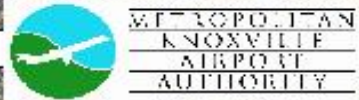
<u>Location</u>	N 35° 57.83' W 83° 52.42
<u>Runway</u>	H3497X75 (ASPH) S-22 MIRL
<u>Elevation</u>	833'
<u>Pattern</u>	1800'
<u>CTAF</u>	126.6
<u>UNICOM</u>	122.95
<u>ATIS</u>	<i>128.35 McGhee Tyson Airport ATIS for up to date TFR information.</i>

V. **Local Tidbits**

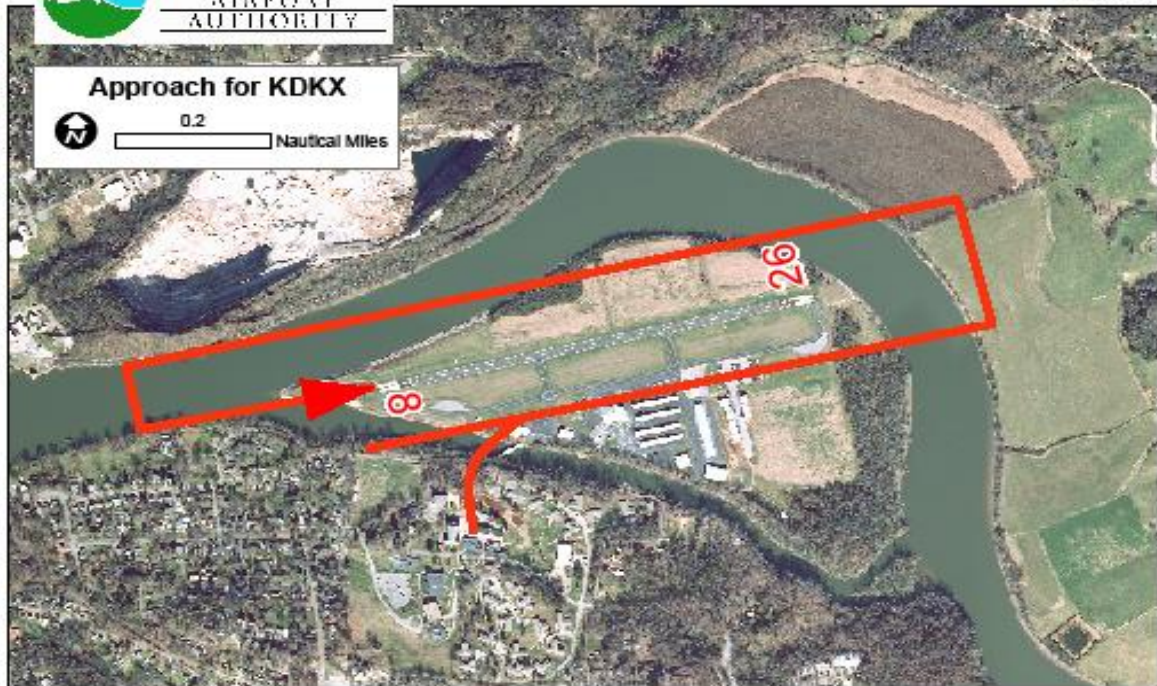
- Calm wind runway is 8.
- For transient aircraft parking on the ramp, point nose of aircraft toward the runway.
- On game days there will be a shuttle bus, rental cars, taxis and limousines available, all at various prices, to get you to the stadium and back.
- Pre-game Hot Dogs and Drinks will be available for purchase at the DKX/MKAA FBO!
- DKX/MKAA is a full-service FBO, please let us know how we can serve you by calling 865-577-4461



TFR for Neyland Stadium
 0.6 Nautical Miles



July 2008



**DEPARTMENT OF TRANSPORTATION
FEDERAL AVIATION ADMINISTRATION**

**KNOXVILLE AIR TRAFFIC CONTROL TOWER
MCGHEE TYSON AIRPORT**

KNOXVILLE, TENNESSEE

ISSUED: August 5, 2009

EFFECTIVE: September 5, 2009

KNOXVILLE AIR TRAFFIC CONTROL TOWER LETTER TO AIRMEN 09-02

SUBJECT: Knoxville Downtown Island Airport (DKX) Arrival/Departure Procedures

CANCELLATION: December 1, 2009

The Air Traffic Control Tower **WILL NOT** be in operation at the Knoxville Downtown Island Airport (DKX) during the University of Tennessee 2009 football season. There will be changes to operating procedures from previous years for aircraft arriving and departing DKX. FDC NOTAM 9/5151 outlining Temporary Flight Restrictions (TFR) from one hour prior to game time until one hour after the game ends will be in effect. The TFR fully encompasses the DKX airport. TFR information is available at <http://tfr.faa.gov> or through Flight Service. Aircraft inbound to the Knoxville, TN area should monitor the McGhee Tyson Airport ATIS on 128.35 for up to date TFR information.

Aircraft inbound to DKX during the effective times of the TFR can expect to keep their transponder set on the assigned beacon code until landing, even if their IFR flight plan is cancelled prior to entering restricted airspace. VFR arrivals to DKX during the effective times of the TFR will be required to obtain a transponder code from Knoxville Approach Control and will be required to keep their transponder set on the assigned code until landing. Aircraft without radios must remain clear of the restricted airspace.

All aircraft must avoid flying directly over Neyland Stadium.

All aircraft departing DKX during the effective times of the TFR are required to contact Downtown Clearance Delivery on 121.7 prior to taxi to obtain either an IFR clearance or a VFR transponder code and a departure control frequency. IFR clearances will be issued with a "Hold For Release." Do not call for IFR release until number one at the end of the runway and ready for immediate departure.

Due to anticipated frequency congestion, aircraft departing VFR should expect significant delays in obtaining airborne IFR clearances or VFR flight following. VFR flight following will only be provided as workload permits.

Home football games are scheduled for the following dates:

September 5, 12, 26

October 3, 10, 31

November 7, 21

Game starting times may not be known until several days before the scheduled game and may vary depending on whether the game will be televised and by which network.

Pilots can expect Pyrotechnics up to 1500 AGL in the vicinity of Neyland Stadium. Pilots should *ensure* that NOTAMs are checked for actual location of pyrotechnics and any other changes that may occur.

The following frequencies will be in use by TYS Approach Control in the Knoxville area:

Knoxville Approach Control North and West of DKX: 123.9

Knoxville Approach Control South and East of DKX: 118.0

DKX Common Traffic Advisory (CTAF): 126.6

Downtown Clearance Delivery: 121.7.

Tamera L. Easterday, Manager

Knoxville Air Traffic Control Tower